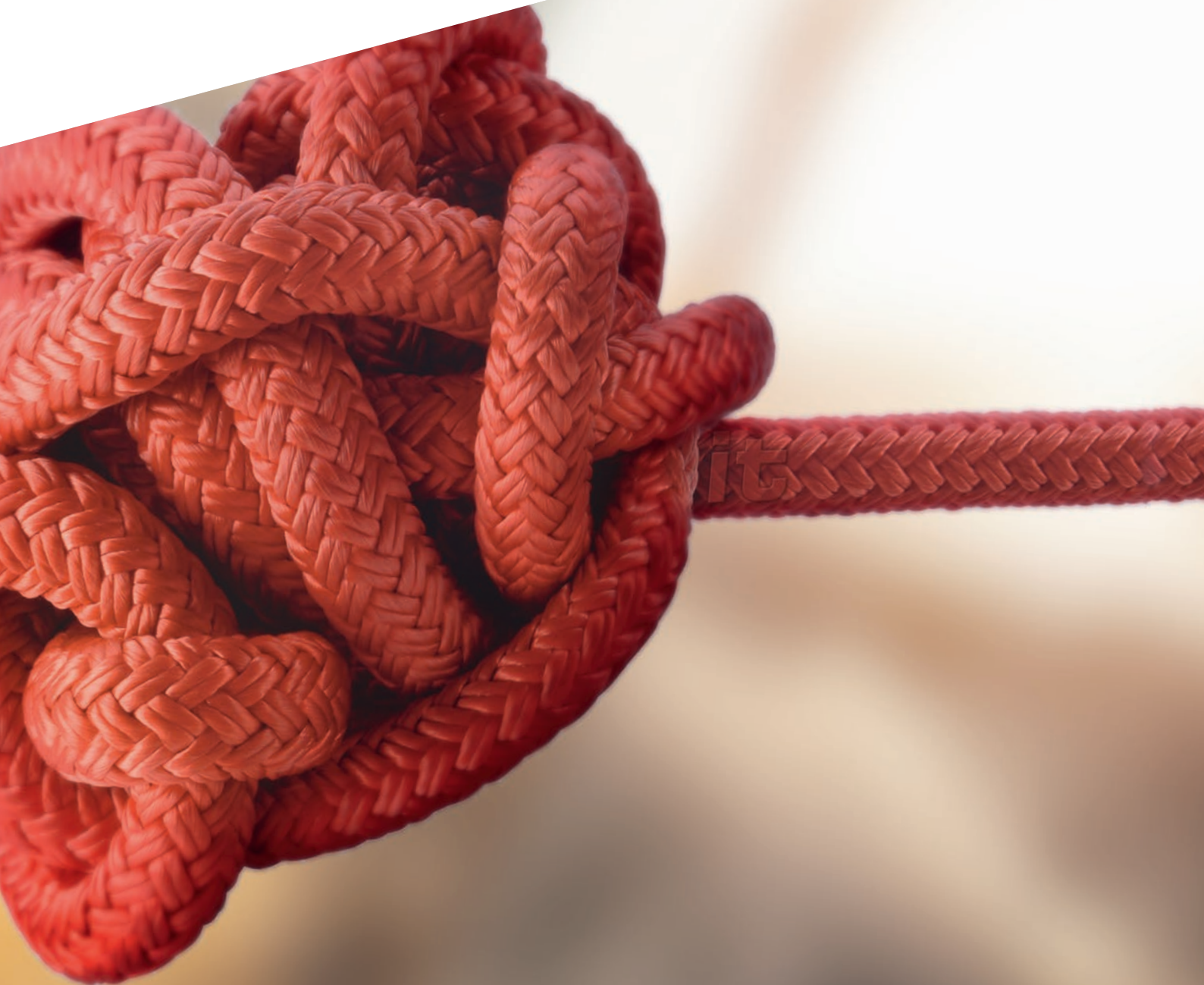


it.mds<sup>ADD</sup> – master data simplified

# Take Control of High-Quality Master Data by Automation, Simplification and Governance

---





By connecting the PLM system to it.mds<sup>ADD</sup>, we can automate the maintenance of up to 98% of the material master fields by applying over 2,500 business rules, 40 profiles and SAP classification.

WITTENSTEIN SE



## Proper Master Data with Minimum Effort

# Everybody Needs Master Data – but Nobody Wants to Handle Them... Until Now!

### **Synchronized Data – Basis for Efficient Business**

Too often master data rules and procedures are opaque, leading to unstructured, complex data distribution and consolidation. Data maintenance frequently lacks ownership or is reliant on key employees. Unfortunately poor master data quality leads to costly error-prone processes and reporting. For example, one survey of global business and information technology (IT) executives found that data-related problems cost the majority of companies more than \$5 million annually.\*

Master data lives its own life in the SAP system and, in general, decisions and processes based on unsynchronized data in the SAP system mean

more risk, more waste and more dissatisfaction for customers. As long as data is found in isolated silos, it will develop differently, causing conflict with other “siloeed” data.

### **Just Keep It Simple with it.mds<sup>ADD</sup>**

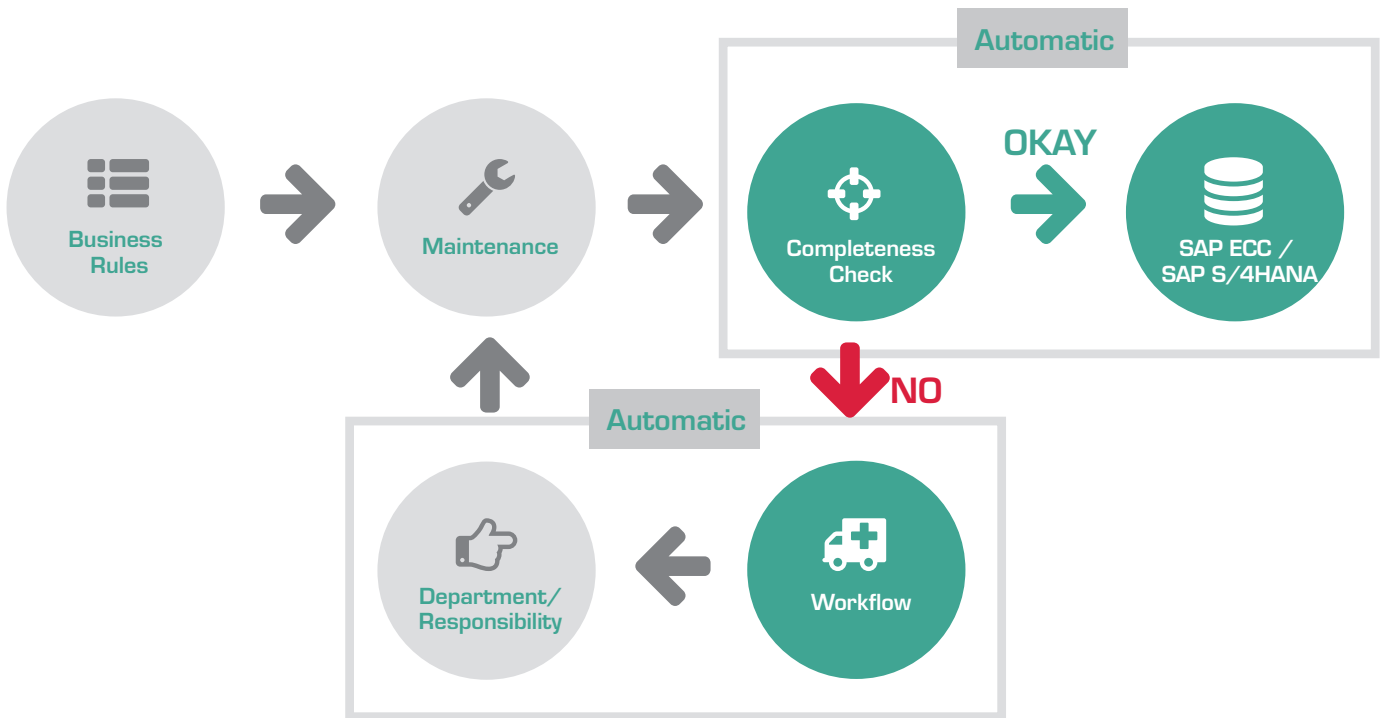
While SAP offers a flexible data model, companies struggle with master data maintenance. We addressed potential gaps with our it.master data simplified (it.mds<sup>ADD</sup>) solution, providing patented software technologies for rule-based data management. it.mds<sup>ADD</sup> can run on SAP ECC & SAP S/4HANA and supports business processes executed in SAP by proper master data with minimum effort. it.mds<sup>ADD</sup> simplifies a series of internal working processes by managing, consolidating and harmonizing all master data in a single, central integrated solution.

### **Meaningful Business Results**

In addition to improving your master data quality, it.mds<sup>ADD</sup> enables you to reduce by up to 95% manual master data entry. This minimizes the chances of costly human errors and significantly increases cost savings.

**95%**  
reduced manual  
master data entry

## Creating Value Through Simplified Data Maintenance




### it.mds<sup>ADD</sup> Features Include:

- Field values derived from Profiles
- Workflow support
- Streamlined interface
- Digital signature
- Approval of critical field changes
- Easy enterprise terminology building
- Master data business rule definitions based on business processes (e.g., How do you plan, source, deliver, etc.)
- Global and local field logic definitions
- Field dependency definitions
- Dependent mandatory fields
- Automated object extension to other locations
- Support for SAP industry solutions
- Dependency between fields across objects
- Designation of values
- Integrated in SAP ECC (from 6.04) – no additional hardware required
- Possibility to approve your master data before they enter SAP

### Additional it.mds<sup>ADD</sup> Benefits Include:

- Better governance through business rules and a greater degree of compliance
- Single overview and single truth for your master data objects
- Request system-ensured data integrity and discipline
- Guaranteed authorization, localization and automation

 it.mds<sup>ADD</sup> is all about making things simpler and at the same time providing a better overview. With it.mds<sup>ADD</sup> errors are minimized and quality can be maximized time-effectively.

\*Source: Forbes Insights, in association with SAP,

“Managing Information in the Enterprise: Perspectives for Business Leaders”, April 2010

